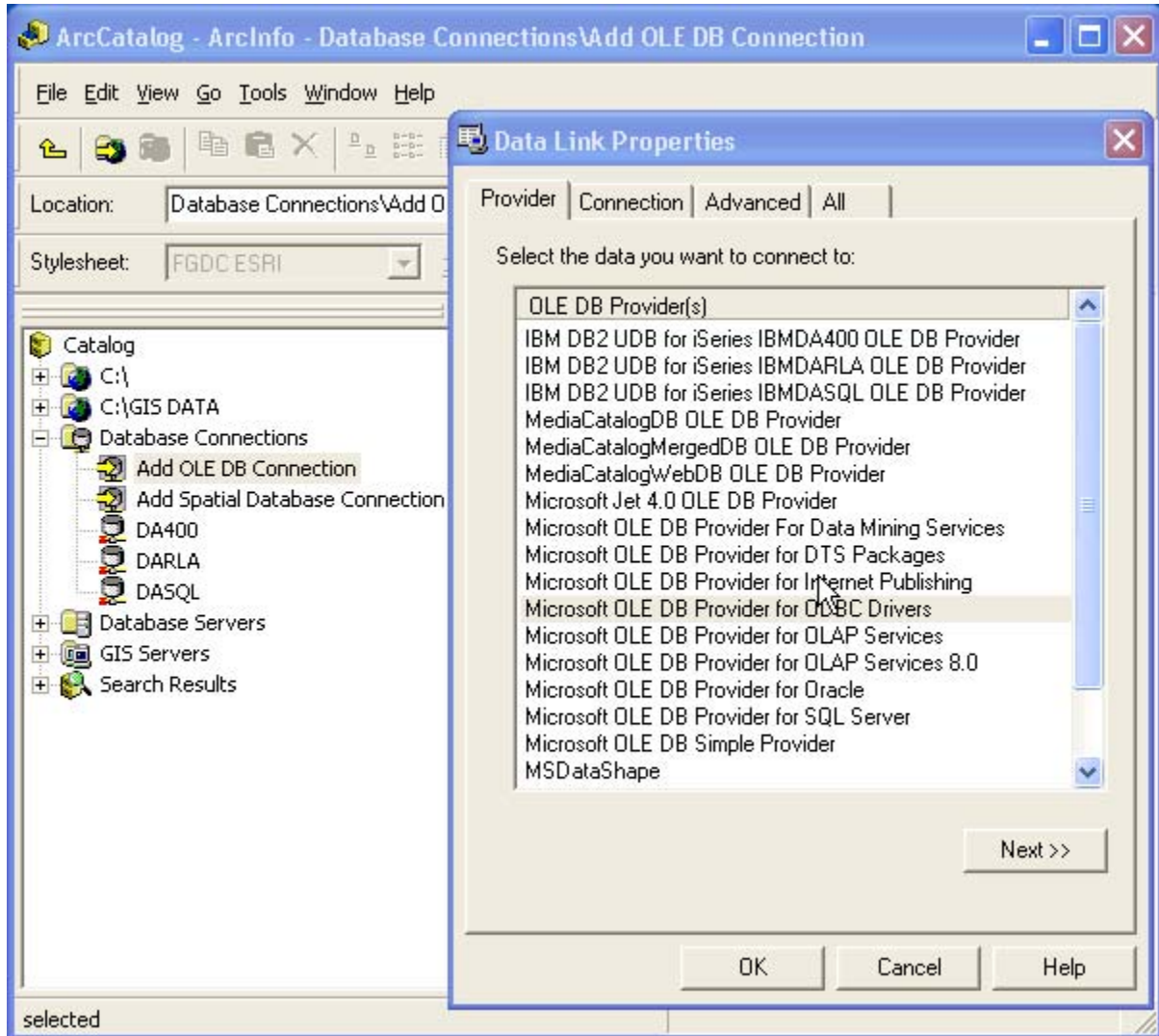


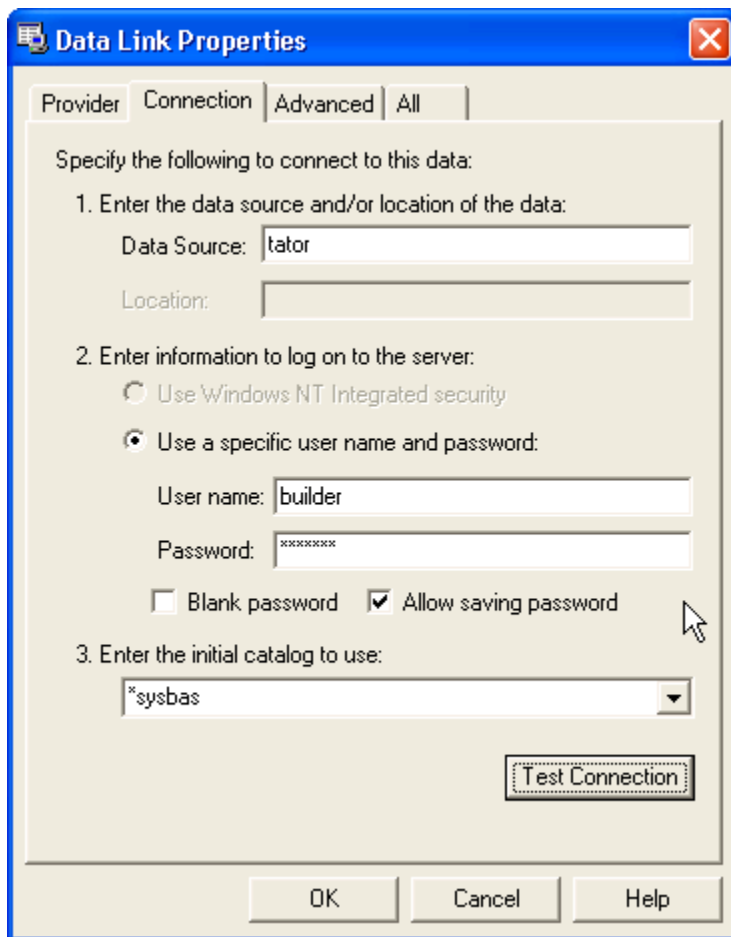
To connect iSeries Data to Arcmap

1. Open Arc Catalog
2. Go to Database Connections -- Choose Add OLE DB Connection

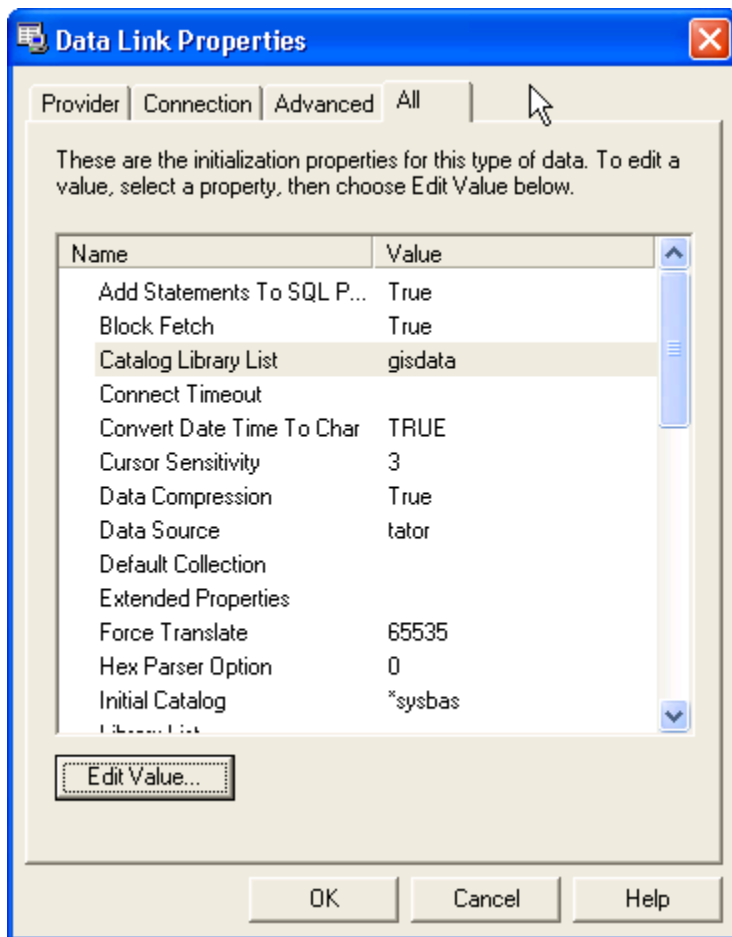


3. Choose **IBM DB2 UDB for iSeries IBMDA400 OLE DB Provider**
4. Choose Next
5. In the Connection Tab:
 - a. Data Source: **System Name** or IP (Qcounty)
 - b. Use a Specific **username** and **password** of a valid AS400 User account
Uncheck blank password
Check Allow saving password
 - c. Initial catalog ***sysbas**
Test connection and you should have connection

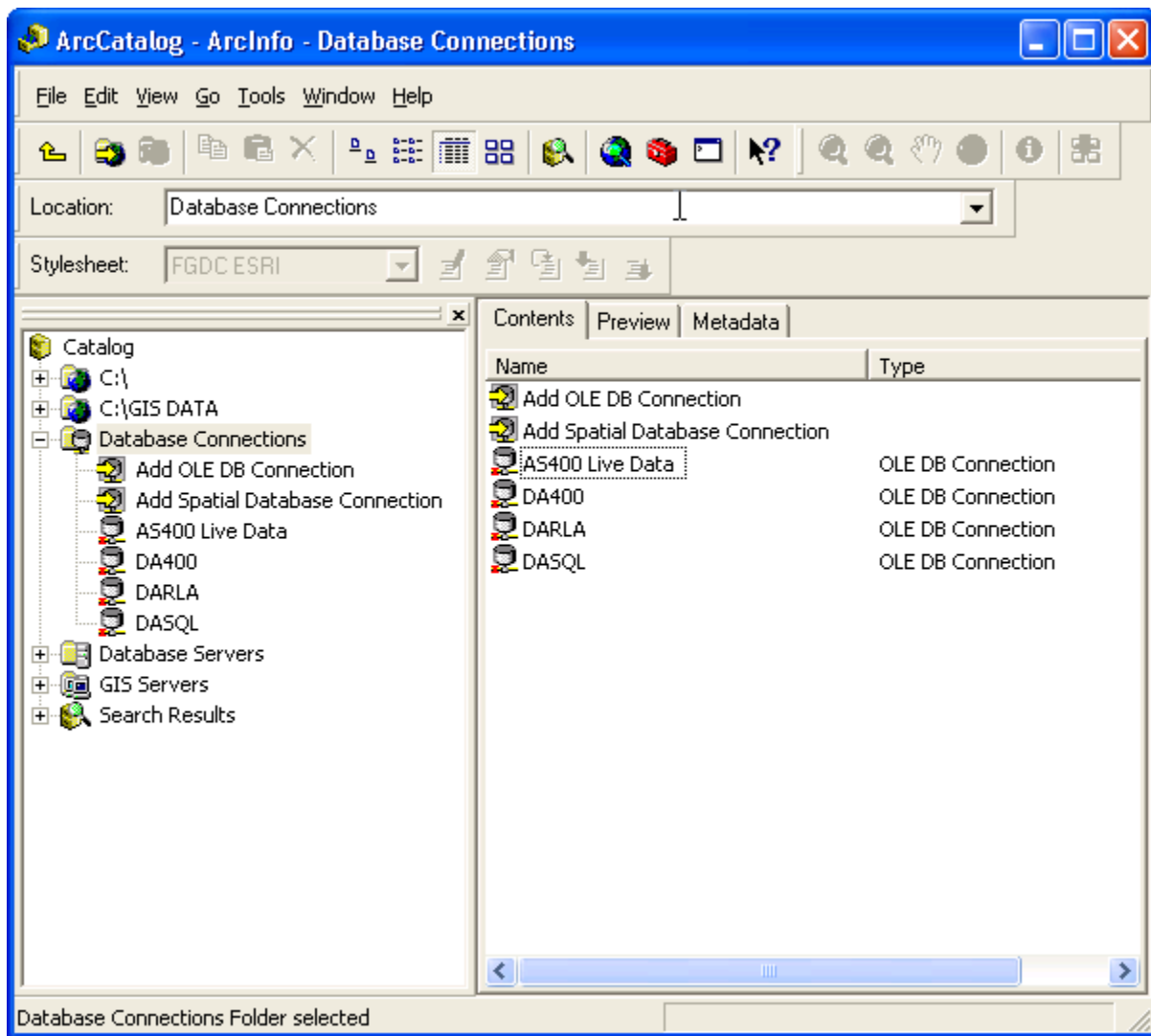




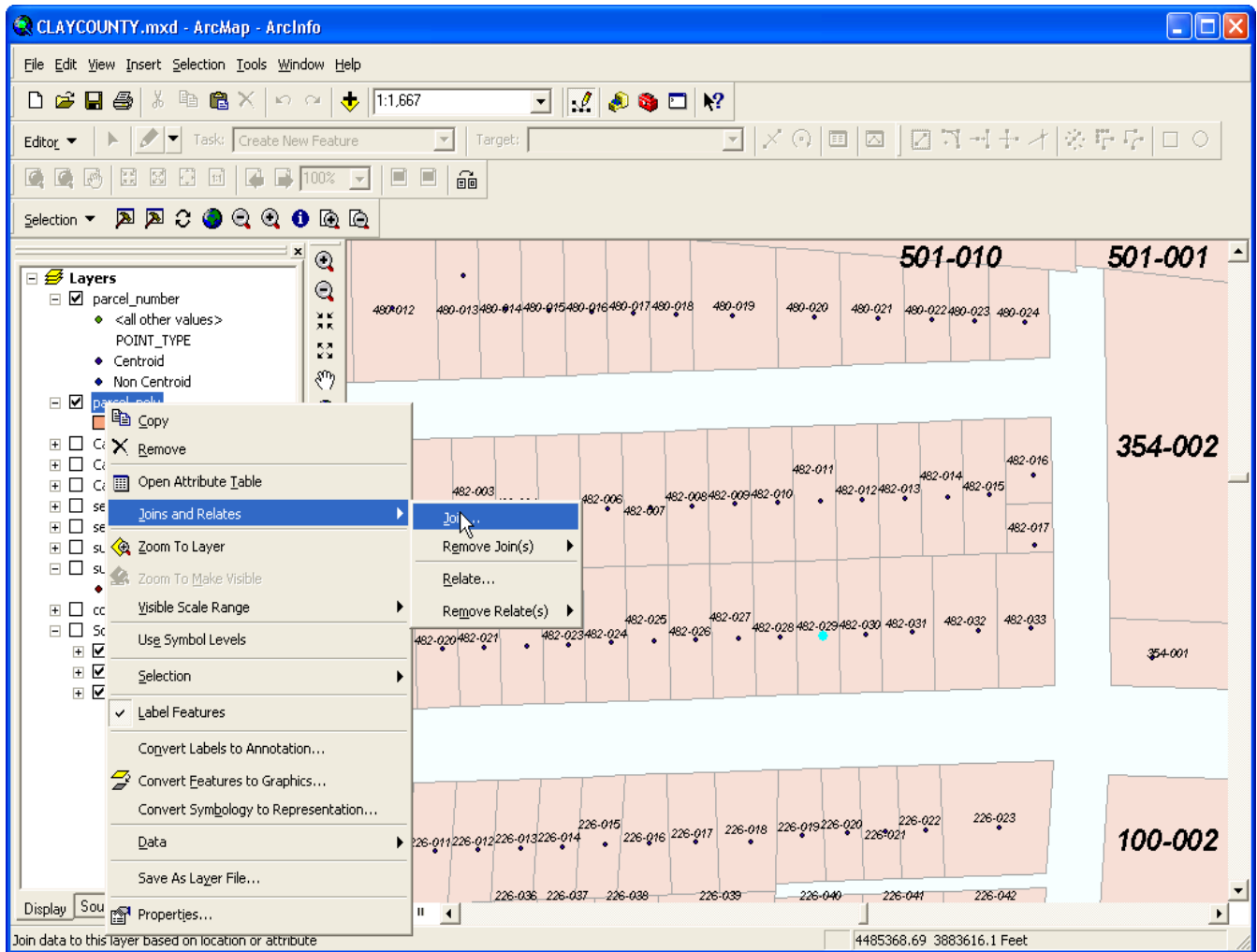
6. In the All tab
Catalog library list needs to have **gisdata**



7. Choose Ok and name the Connection (AS400 Livedata)

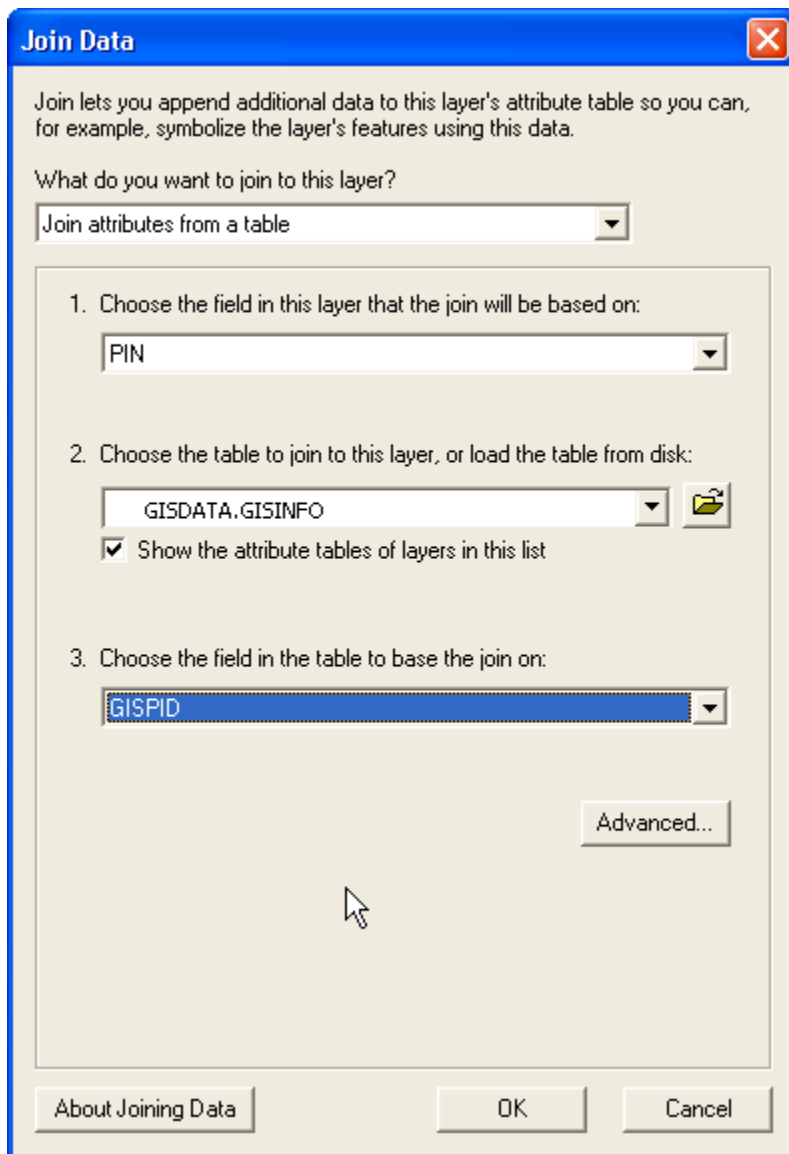


Once the table is linked in ArcCatalog we can join it to a layer on the maps.



In the Join screen select your parcel number field as the field layer to join on, choose the GISData OLE Database connection link, and select GISPID as the field to base the join on.





The data should now be joined to the layer and available in the map documents.